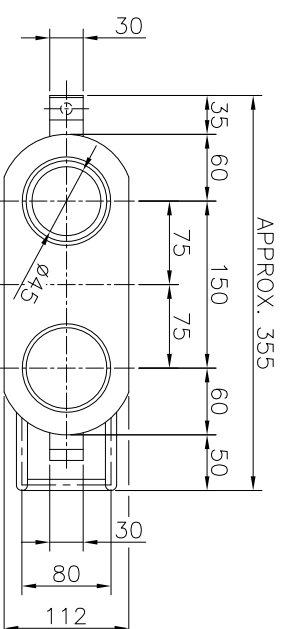
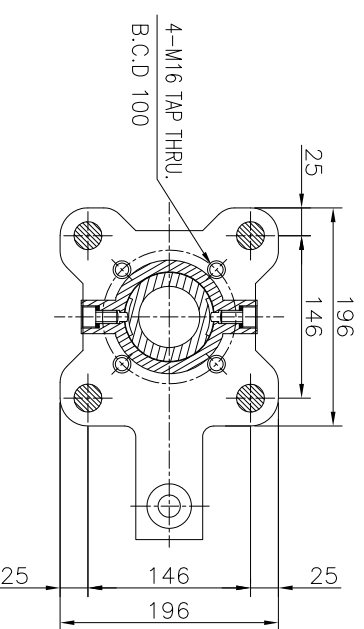


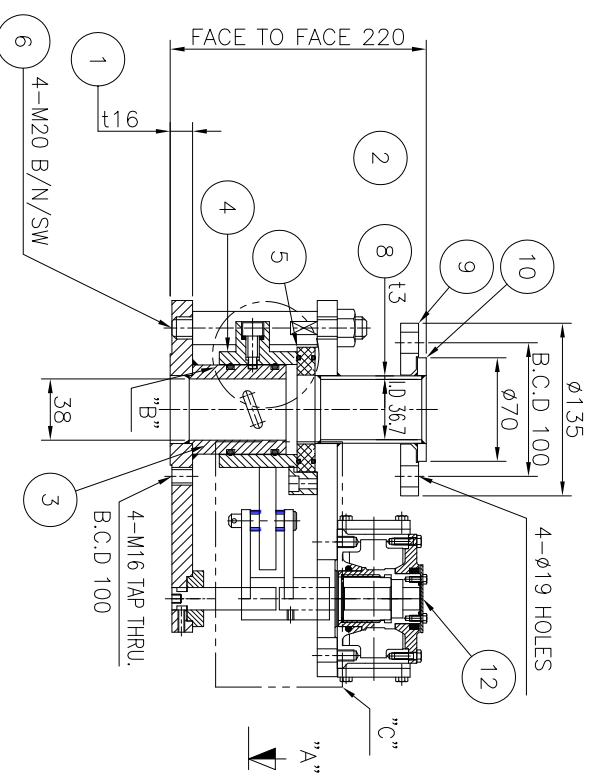
TOP VIEW



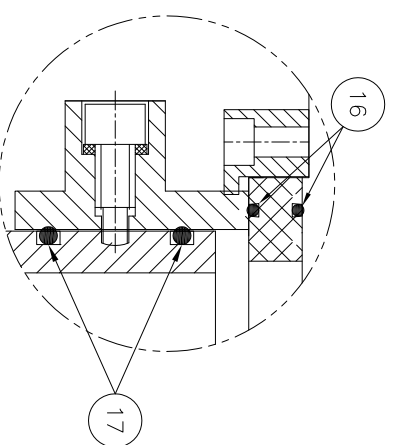
DETAIL OF GOGGLE PLATE



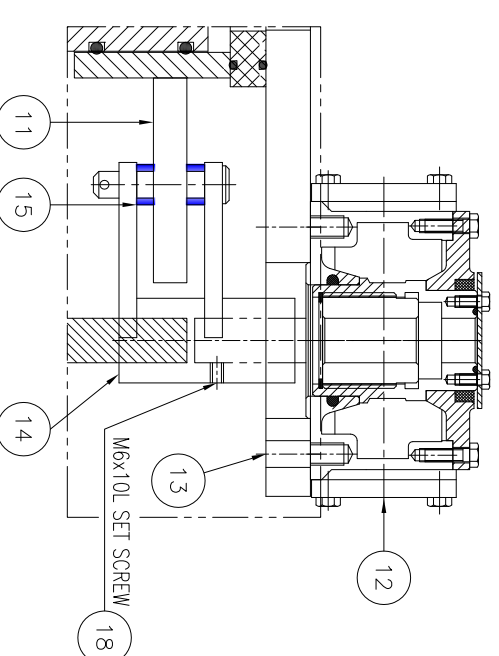
SECTION "A"-"A"



ELEVATION



DETAIL "B"  
SCALE 1:3



DETAIL "C"  
SCALE 1:2

NO.	SPECIFICATION	MATERIAL	UNIT	QUANTITY	REMARK
1	MANUAL OPERATED GOGGLE V/V		SET	1	
1	SQUARE FLANGE	STS304	EA	1	
2	GEAR SIDE FLANGE	STS304	EA	1	
3	BASE PIPE	STS304	EA	1	
4	OPERATING PIPE	STS304	EA	1	
5	GOGGLE PLATE	STS304	EA	1	
6	CONNECTING B/N/SW	420J2+STS304	SET	4	
7	==BLANK==				
8	BODY PIPE	STS304	EA	1	
9	BODY FLANGE	STS304	EA	1	
10	END PLATE	STS304	EA	1	
11	OPERATING BLOCK	STS304	EA	1	
12	GEAR BOX	PURCH.	EA	1	
13	GEAR BOX B/SW	4T	SET	4	
14	LINK	STS304	EA	1	
15	BUSH	PURCH.	EA	1	
16	SEAT	VITON	EA	4	
17	PIPE SEAL	NBR	EA	2	
18	SET SCREW	STS304	EA	1	

NOTE.

1. FLANGE DRILLING : JIS 10K. RF FLANGE TYPE.
2. FACE-TO-FACE DIMENSIONS : MAKER ST'D
3. LEAK TEST : MAKER STANDARD.  
SEAT(LK) : 11 kg/cm<sup>2</sup> / 60sec.(WATER)
4. APPROX DIMENSION HAS ±10mm TOLERANCE

MODEL NO. : MTS B10-860 GO V O  
Q-CODE : Q4410789

<p style="text-align: center;"><b>posco</b></p>				SCALE	N/S	PROJECTION
<p style="text-align: center;">MANUAL OPERATED GOGGLE V/V</p>				SIZE	A3	1:1
<p style="text-align: center;">JISTOK. RF FLANGE TYPE. 32A</p>				CLASS		
NO.	DATE	REVISIONS & DESCRIPTION	DRAWN	CHECKED	REVIEWED	APPROVED
<p style="text-align: center;">posco</p>			DRW. NO.	DATE	DRW. NO.	DATE
<p style="text-align: center;">주식회사 포스코</p>						